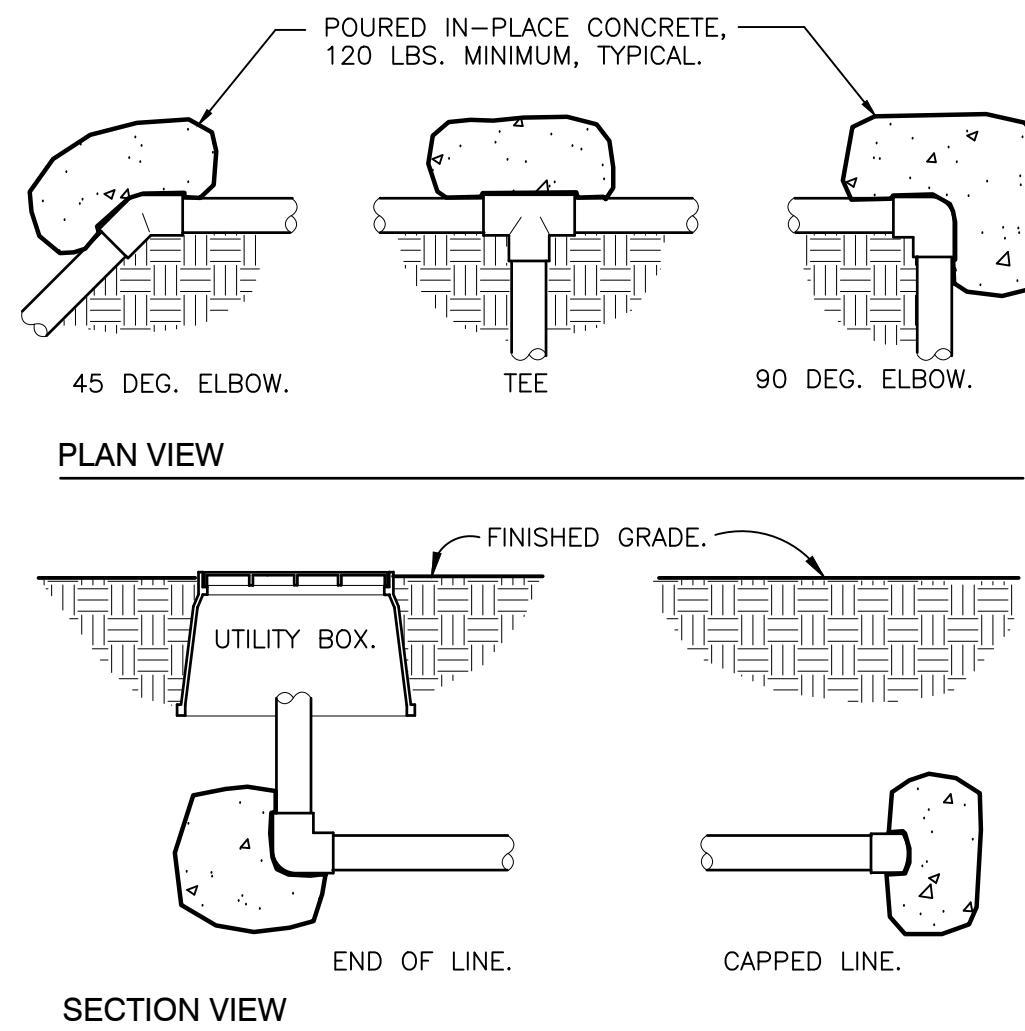
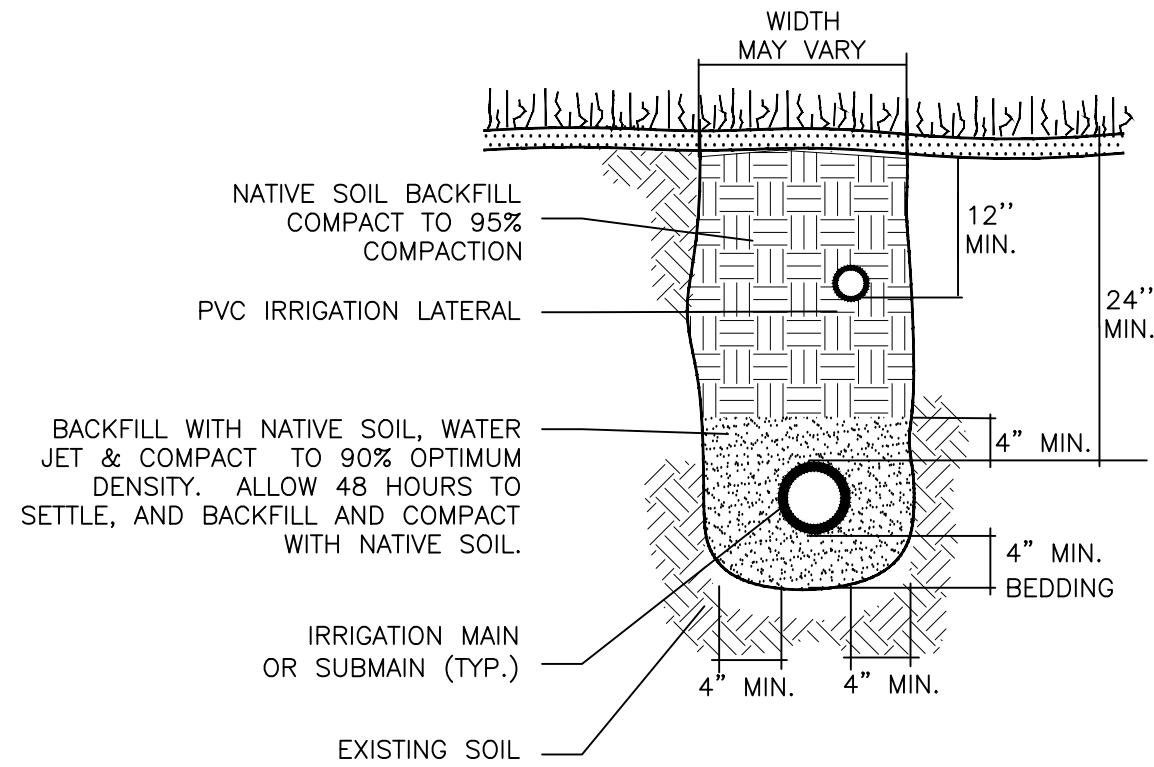


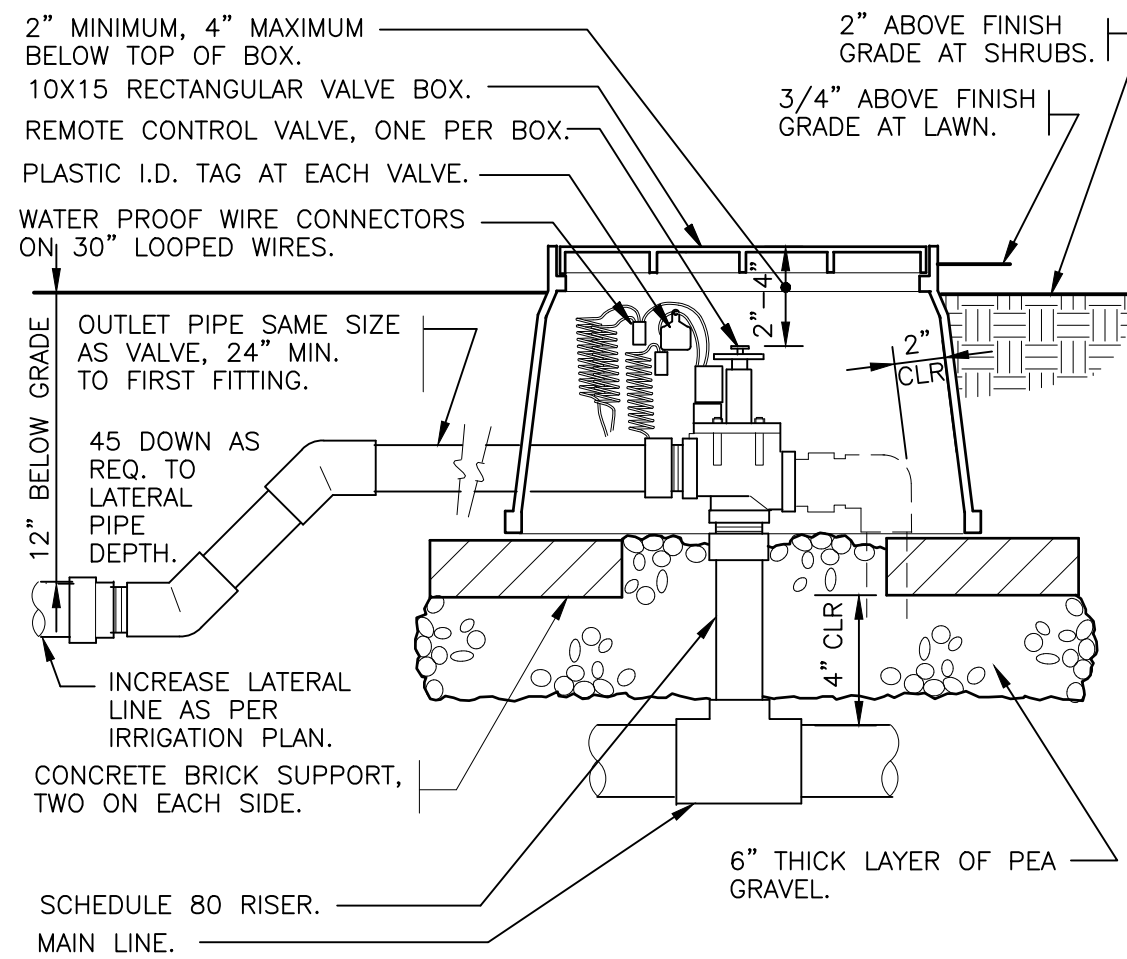
Plotted By: Harpatt, Tom Sheet Set: 2690 WEST SAMPLE ROAD Layout: L3.01 IRRIGATION DETAILS September 16, 2025 01:10:16pm K:\11-eval\143 jobs\143360001 2690 west sample road civil and Design\CADD\plansheets\IRRIGATION PLAN.dwg  
This document, together with the concepts and designs presented herein, is intended only for the specific purpose and client for which it was prepared. Reuse of and improper reliance on this document without written authorization and adaptation by Kimley-Horn and Associates, Inc. shall be without liability to Kimley-Horn and Associates, Inc.



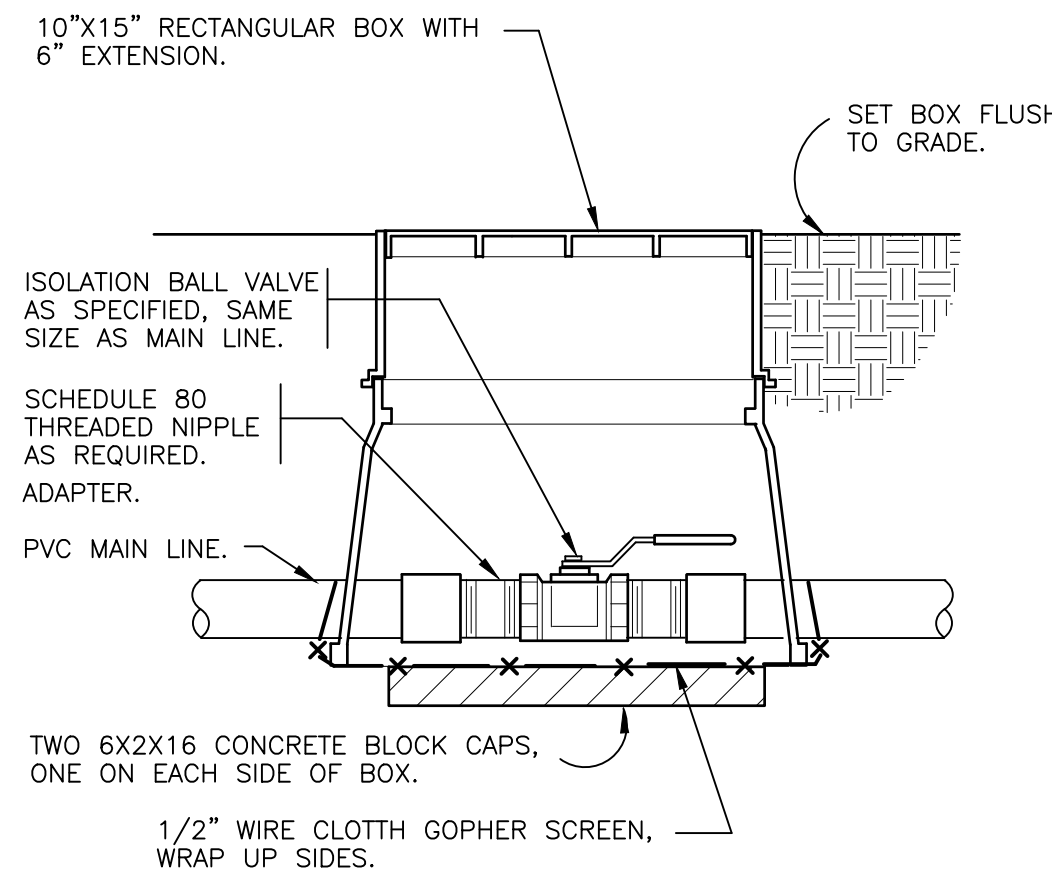
1 THRUST BLOCKING  
3/4" = 1'-0"  
32 8409.76-01



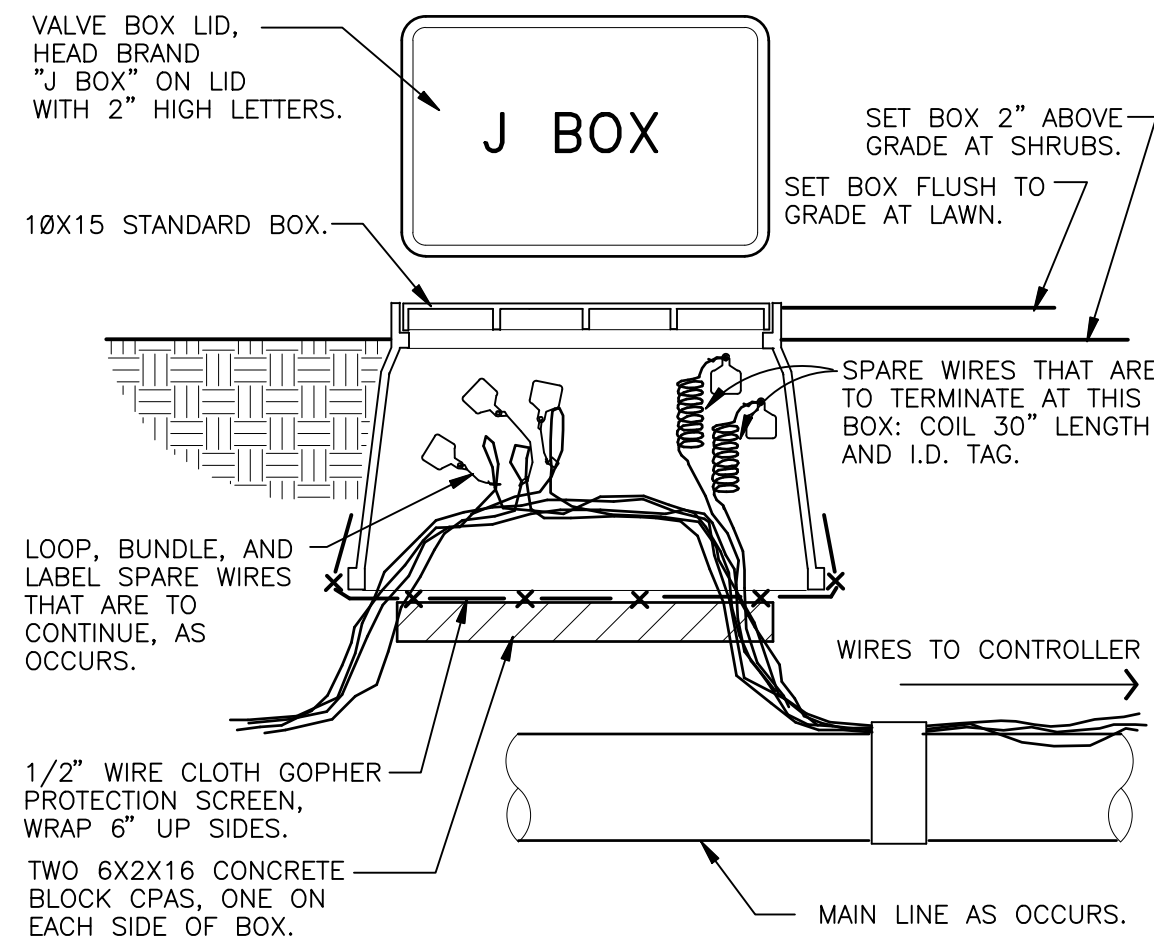
2 TRENCHING DETAIL  
NOT TO SCALE  
32 8409.76-03



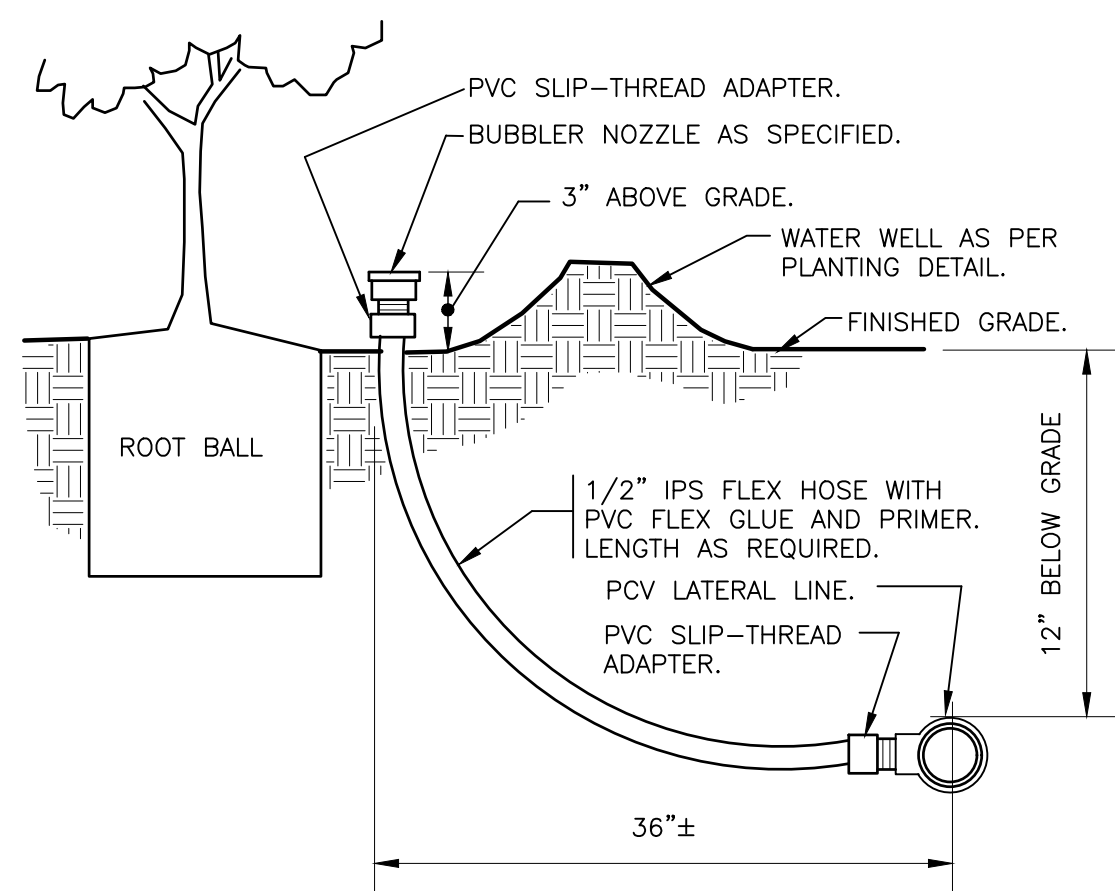
3 ELECTRIC REMOTE CONTROL VALVE  
1 1/2" = 1'-0"  
32 8406.13-01



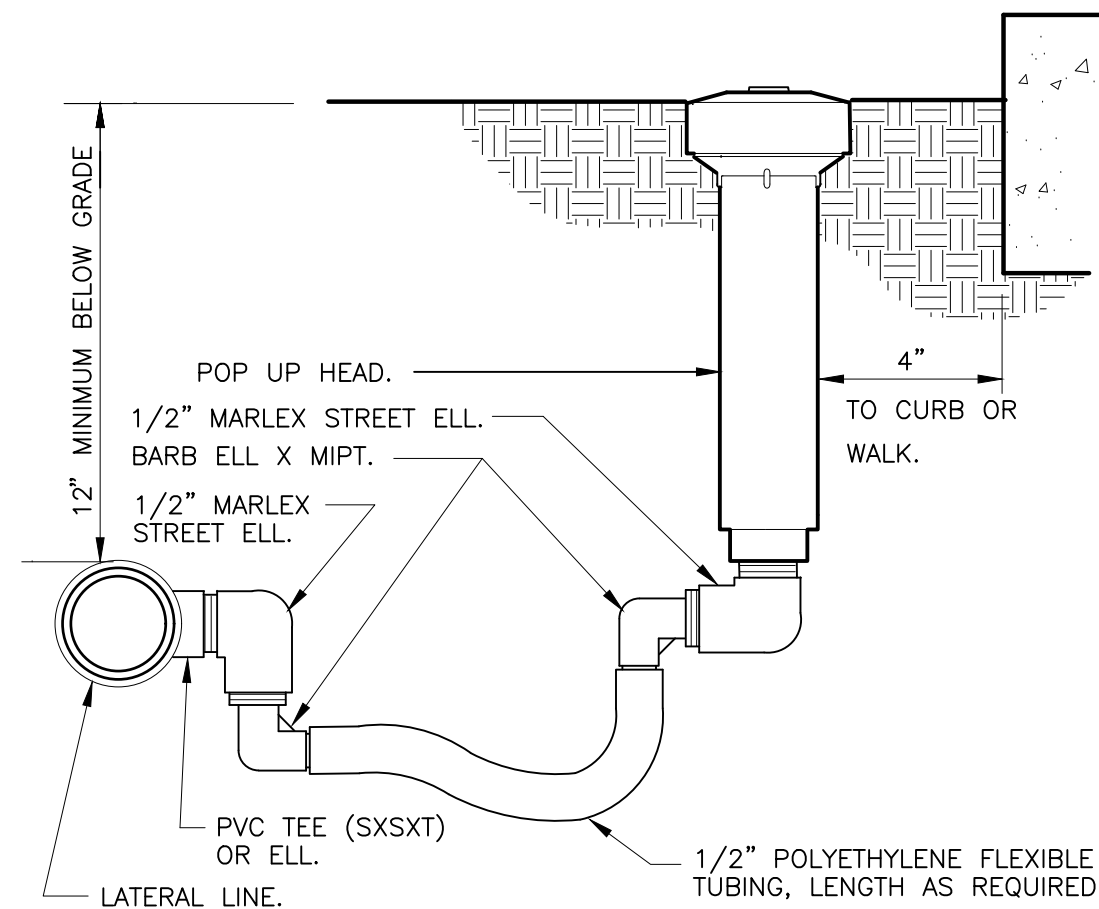
4 BRASS BALL ISOLATION VALVE  
1 1/2" = 1'-0"  
32 8406.33-02



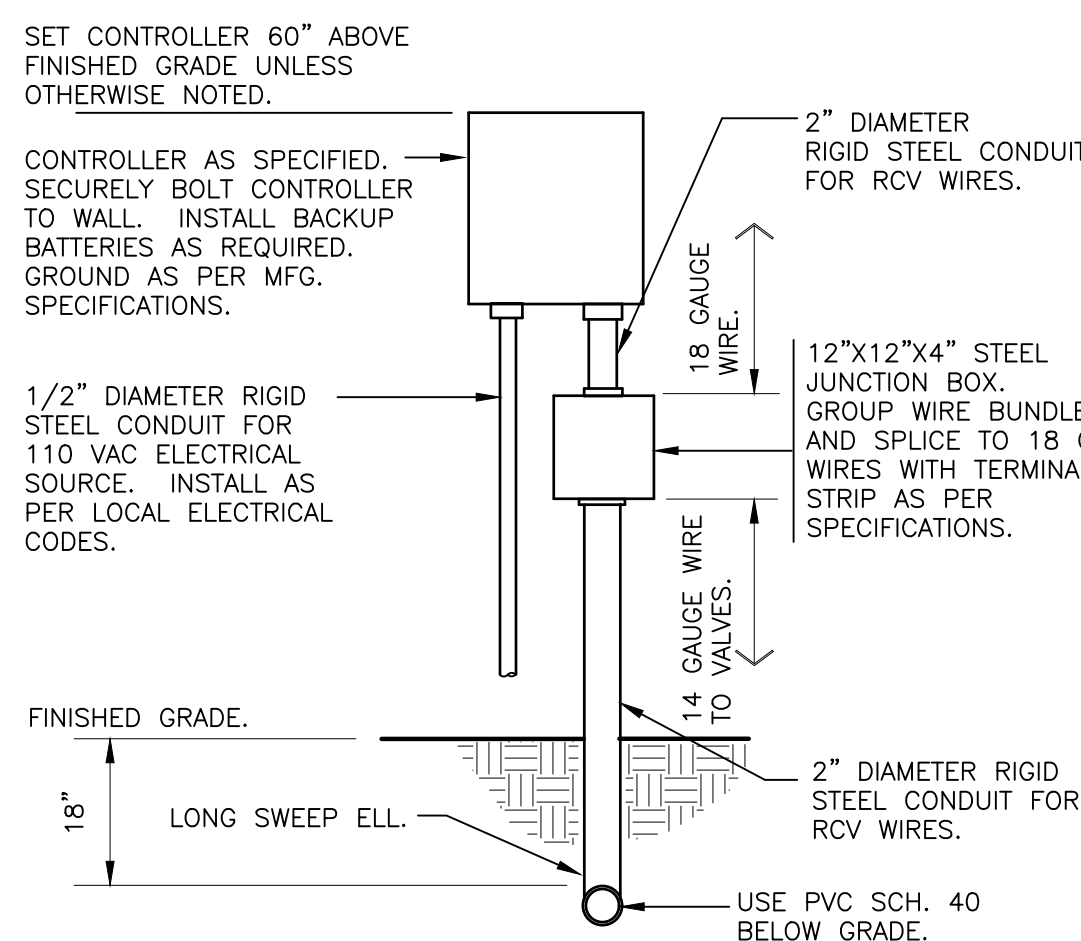
5 WIRE BUNDLE JUNCTION BOX  
1 1/2" = 1'-0"  
32 8409.79-01



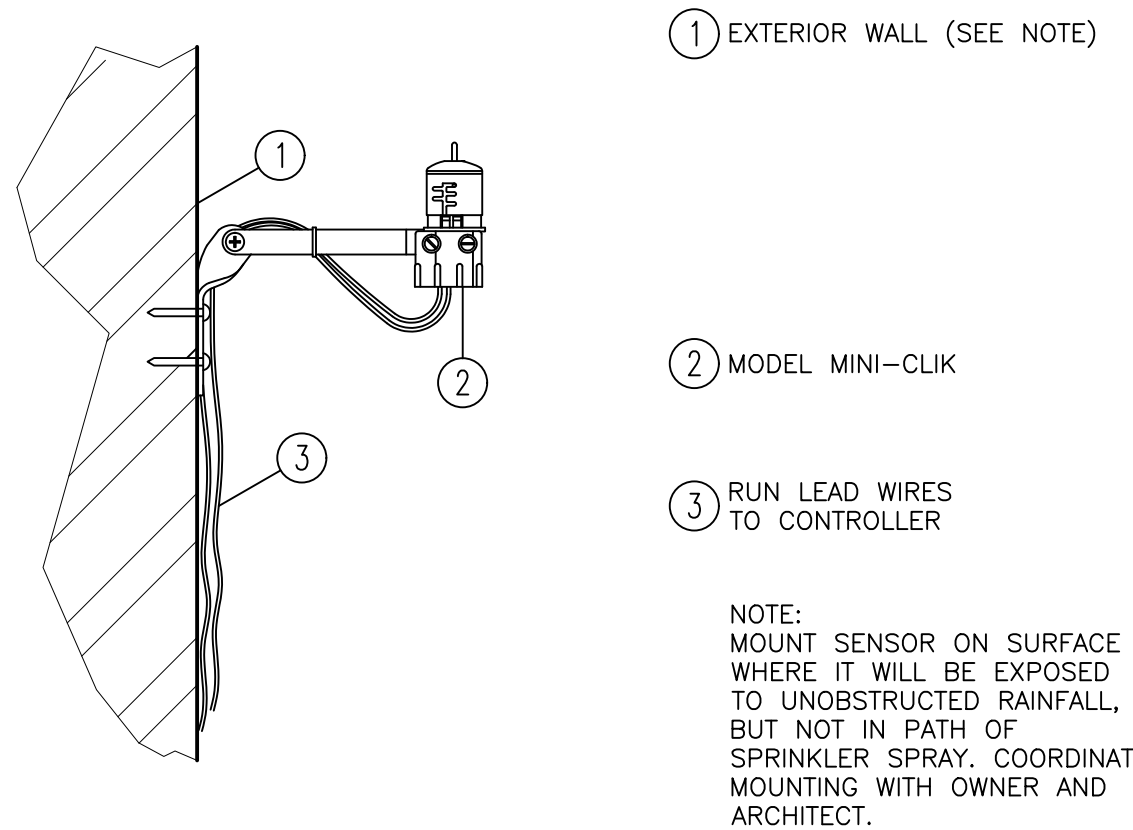
6 BUBBLER ON FLEX HOSE RISER  
3" = 1'-0"  
DETAIL-FILE



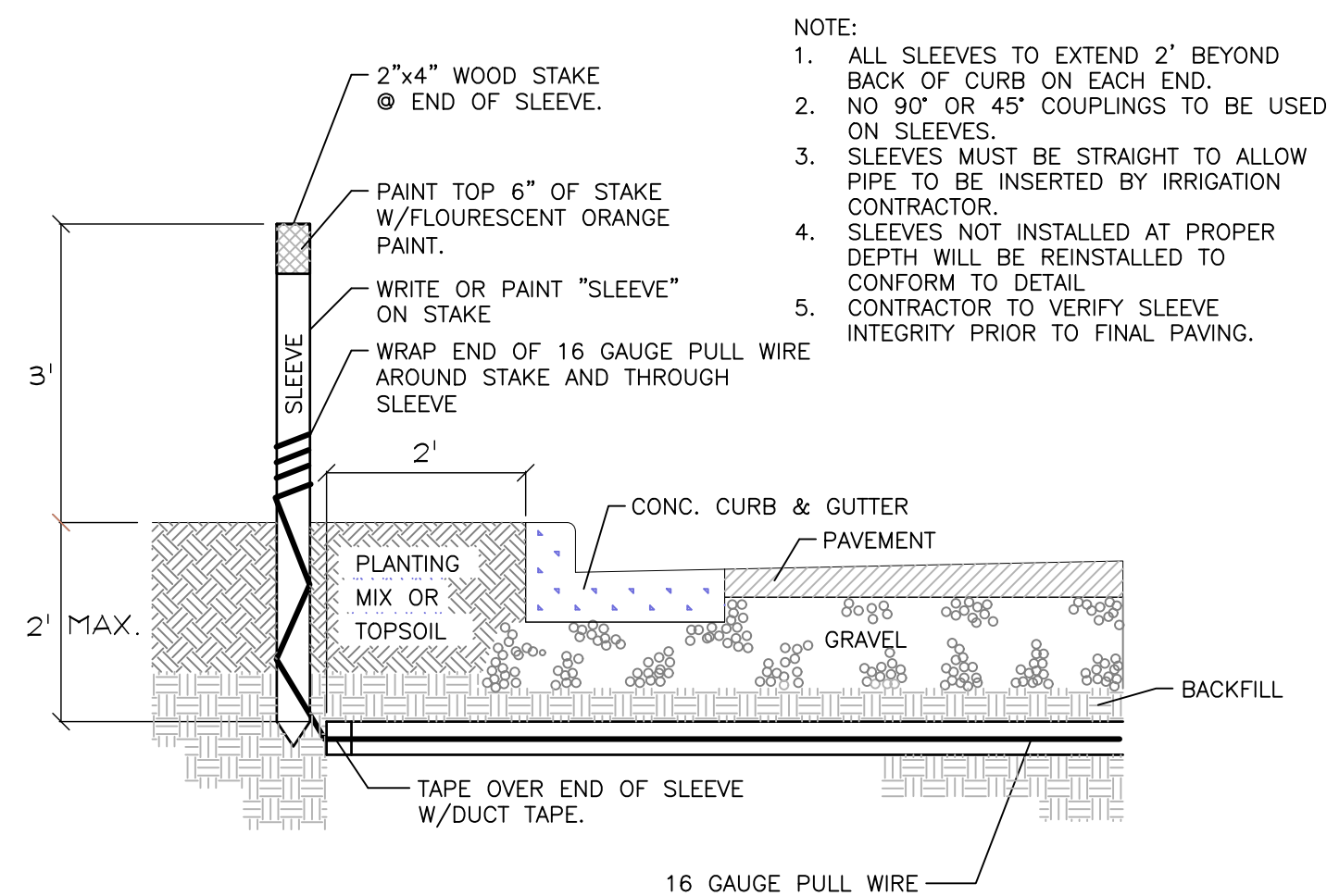
7 POP-UP SPRAY FLEX ASSEMBLY  
3" = 1'-0"  
32 8403.13-02



8 WALL MOUNT CONTROLLER  
1" = 1'-0"  
328409.13-02



9 RAIN SENSOR  
3" = 1'-0"



10 IRRIGATION SLEEVING  
NTS

THE PRESENCE OF GROUNDWATER SHOULD BE ANTICIPATED. CONTRACTOR'S BID SHALL INCLUDE CONSIDERATION FOR ADDRESSING THIS ISSUE AND OBTAINING ALL NECESSARY PERMITS.

ALL ELEVATIONS SHOWN ON THESE PLANS ARE BASED ON THE NAVD 88. TO CONVERT THE ELEVATION HEREON TO NGVD 29 ADD 1.51 FEET.

**811** KNOW WHAT'S BELOW ALWAYS CALL 811 BEFORE YOU DIG  
It's fast. It's free. It's the law.  
www.callsunshine.com

2690 WEST SAMPLE ROAD PREPARED FOR NATIONAL EXPRESS WASH LLC CITY OF POMPANO BEACH FLORIDA		IRRIGATION DETAILS		KHA PROJECT DATE SEPT 2025 SCALE AS SHOWN DESIGNED BY DRAWN BY CHECKED BY		THOMAS C HARPATT LA 6897512 STATE OF FLORIDA REGISTERED LANDSCAPE ARCHITECT		Kimley»Horn © 2025 KIMLEY-HORN AND ASSOCIATES, INC. 8201 PETERS ROAD, SUITE 2200, PLANTATION, FL 33324 PHONE: 954-535-5100 FAX: 954-739-2247 WWW.KIMLEY-HORN.COM REGISTRY No. 696		REVISIONS No.		DATE BY	
---	--	--------------------	--	---	--	---	--	--	--	------------------	--	------------	--